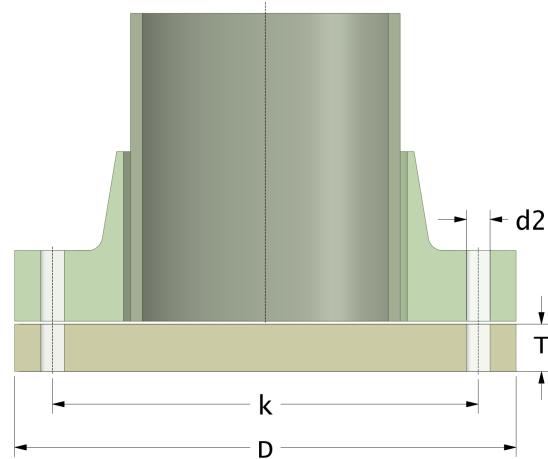
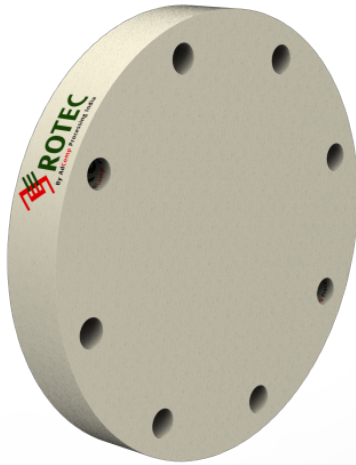


Rotec SMC Blind Flange

Drilling Standard: JIS B2220 16K



#	DN (mm)	Pmax (bar)	D (mm)	k (mm)	Holes (no.)	d2 (mm)	T (mm)	Article Number
1	150	10	305	260	12	25	25	BFP-150-10/16K
2	150	16	305	260	12	25	31	BFP-150-16/16K
3	150	20	305	260	12	25	33	BFP-150-20/16K
4	200	10	350	305	12	25	30	BFP-200-10/16K
5	200	16	350	305	12	25	40	BFP-200-16/16K
6	200	20	380	305	12	25	45	BFP-200-20/16K
7	250	10	430	380	12	27	40	BFP-250-10/16K
8	250	16	430	380	12	27	45	BFP-250-16/16K
9	250	20	430	380	12	27	49	BFP-250-20/16K
10	300	10	490	430	16	27	45	BFP-300-10/16K
11	300	16	490	430	16	27	53	BFP-300-16/16K
12	300	20	490	430	16	27	57	BFP-300-20/16K

Disclaimer

Whilst every care is taken to ensure that the information on this website is complete and accurate, AdComp Processing Technology Pvt. Ltd. India cannot accept responsibility for any omissions or inaccuracies or for any consequences arising therefrom. By using this website, the user accepts the terms of this disclaimer.

10-02-2023