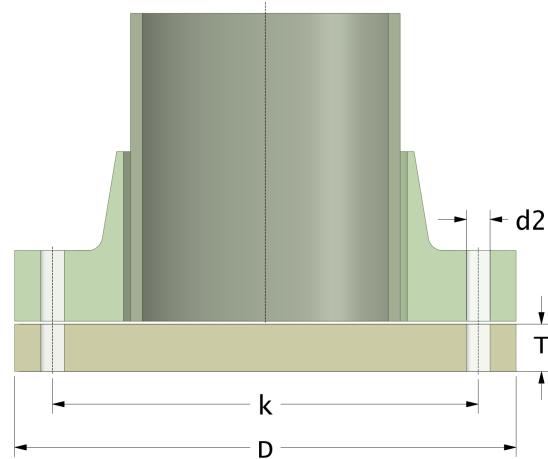
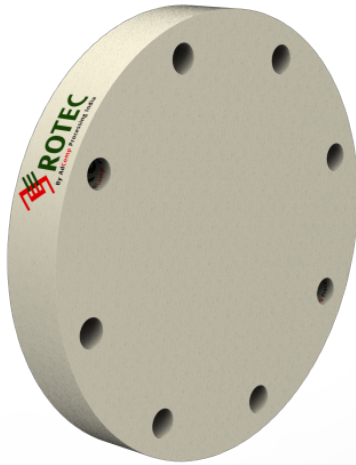


## Rotec SMC Blind Flange

Drilling Standard: EN1092 PN40



#	DN (mm)	Pmax (bar)	D (mm)	k (mm)	Holes (no.)	d2 (mm)	T (mm)	Article Number
1	15	32	98	65	4	14	32	BFP-15-32/40
2	20	32	98	75	4	14	32	BFP-20-32/40
3	25	32	116	85	4	14	32	BFP-25-32/40
4	32	32	140	100	4	18	32	BFP-32-32/40
5	40	32	154	110	4	18	32	BFP-40-32/40
6	50	32	164	125	4	18	32	BFP-50-32/40
7	65	32	184	145	4	18	32	BFP-65-32/40
8	80	32	200	160	8	18	40	BFP-80-32/40
9	100	32	228	190	8	22	40	BFP-100-32/40
10	125	32	270	220	8	26	39	BFP-125-32/40
11	150	32	305	250	8	26	43	BFP-150-32/40
12	200	32	380	320	12	30	53	BFP-200-32/40
13	250	32	450	385	12	33	65	BFP-250-32/40
14	300	32	540	450	16	33	73	BFP-300-32/40

### Disclaimer

Whilst every care is taken to ensure that the information on this website is complete and accurate, AdComp Processing Technology Pvt. Ltd. India cannot accept responsibility for any omissions or inaccuracies or for any consequences arising therefrom. By using this website, the user accepts the terms of this disclaimer.

10-02-2023