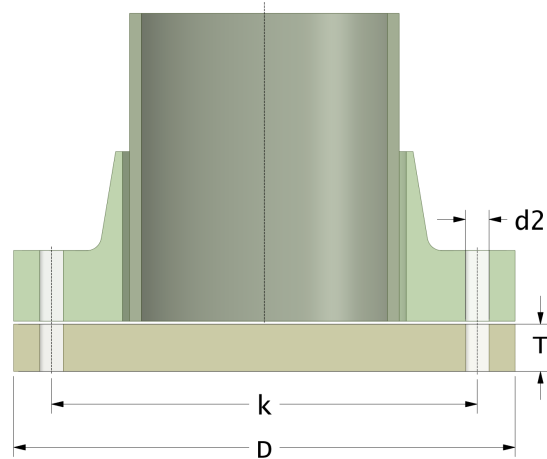
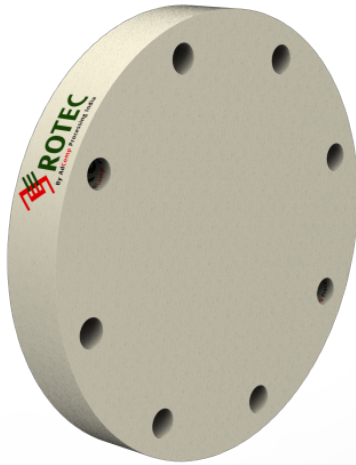


## Rotec SMC Blind Flange

Drilling Standard: EN1092 PN25



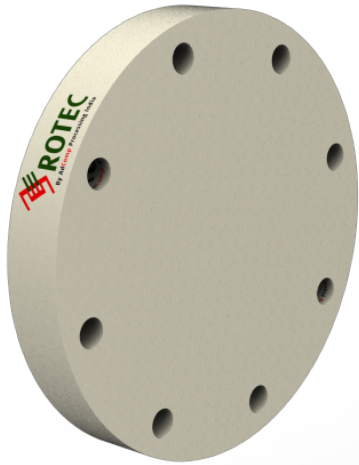
#	DN (mm)	Pmax (bar)	D (mm)	k (mm)	Holes (no.)	d2 (mm)	T (mm)	Article Number
1	15	25	98	65	4	14	28	BFP-15-25/25
2	20	25	98	75	4	14	28	BFP-20-25/25
3	25	25	116	85	4	14	28	BFP-25-25/25
4	32	25	140	100	4	18	28	BFP-32-25/25
5	40	25	154	110	4	18	28	BFP-40-25/25
6	50	25	164	125	4	18	28	BFP-50-25/25
7	65	25	184	145	4	18	28	BFP-65-25/25
8	80	25	200	160	8	18	32	BFP-80-25/25
9	100	25	228	190	8	22	32	BFP-100-25/25
10	125	25	270	220	8	26	34	BFP-125-25/25
11	150	20	305	250	8	26	33	BFP-150-20/25
12	150	25	305	250	8	26	38	BFP-150-25/25
13	200	20	380	310	12	26	45	BFP-200-20/25
14	200	25	380	310	12	26	49	BFP-200-25/25
15	250	20	430	370	12	30	49	BFP-250-20/25
16	250	25	430	370	12	30	57	BFP-250-25/25

### Disclaimer

Whilst every care is taken to ensure that the information on this website is complete and accurate, AdComp Processing Technology Pvt. Ltd. India cannot accept responsibility for any omissions or inaccuracies or for any consequences arising therefrom. By using this website, the user accepts the terms of this disclaimer.

## Rotec SMC Blind Flange

Drilling Standard: EN1092 PN25



#	DN (mm)	Pmax (bar)	D (mm)	k (mm)	Holes (no.)	d2 (mm)	T (mm)	Article Number
17	300	20	490	430	16	30	57	BFP-300-20/25
18	300	25	490	430	16	30	65	BFP-300-25/25

### Disclaimer

Whilst every care is taken to ensure that the information on this website is complete and accurate, AdComp Processing Technology Pvt. Ltd. India cannot accept responsibility for any omissions or inaccuracies or for any consequences arising therefrom. By using this website, the user accepts the terms of this disclaimer.

10-02-2023