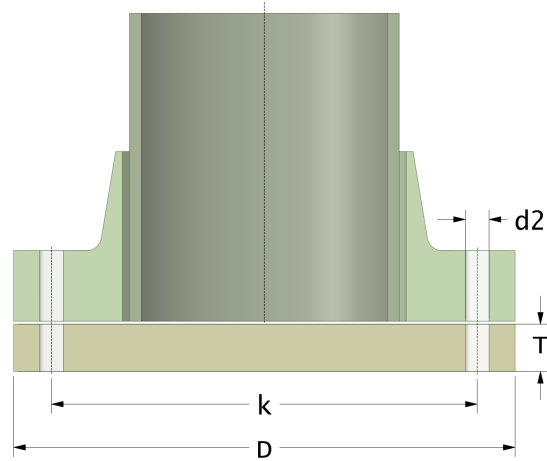
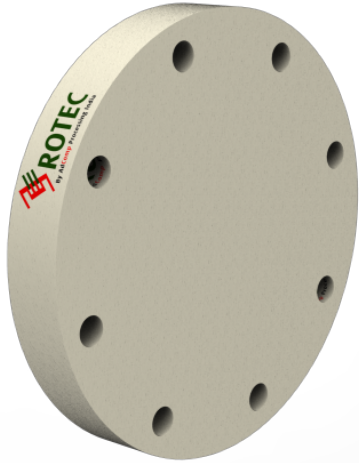


## Rotec SMC Blind Flange

Drilling Standard: AS 2129 Table D



#	DN (mm)	Pmax (bar)	D (mm)	k (mm)	Holes (no.)	d2 (mm)	T (mm)	Article Number
1	150	10	285	235	8	18	25	BFP-150-10/AS-D
2	150	16	285	235	8	18	31	BFP-150-16/AS-D
3	200	10	350	292	8	18	30	BFP-200-10/AS-D
4	200	16	350	292	8	18	40	BFP-200-16/AS-D
5	250	10	410	356	8	22	40	BFP-250-10/AS-D
6	250	16	410	356	8	22	45	BFP-250-16/AS-D
7	300	10	460	406	12	22	45	BFP-300-10/AS-D
8	300	16	460	406	12	22	53	BFP-300-16/AS-D

### Disclaimer

Whilst every care is taken to ensure that the information on this website is complete and accurate, AdComp Processing Technology Pvt. Ltd. India cannot accept responsibility for any omissions or inaccuracies or for any consequences arising therefrom. By using this website, the user accepts the terms of this disclaimer.

10-02-2023