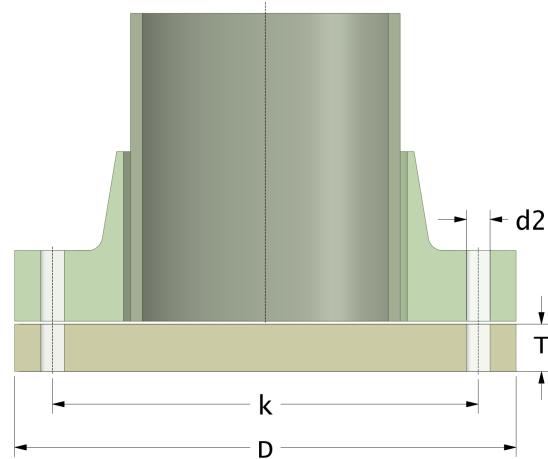
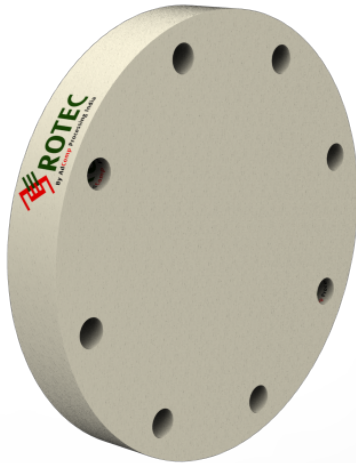


Rotec SMC Blind Flange

Drilling Standard: ANSI B16.5 Class 300



#	DN (mm)	Pmax (bar)	D (mm)	k (mm)	Holes (no.)	d2 (mm)	T (mm)	Article Number
1	25	16	125	89	4	19	23	BFP-25-16/300
2	40	16	154	114	4	22	23	BFP-40-16/300
3	50	16	164	127	8	19	23	BFP-50-16/300
4	65	16	200	149	8	22	23	BFP-65-16/300
5	80	16	220	168	8	22	29	BFP-80-16/300
6	100	16	255	200	8	22	29	BFP-100-16/300
7	125	16	285	235	8	22	34	BFP-125-16/300
8	150	16	325	270	12	22	31	BFP-150-16/300
9	150	20	325	270	12	22	33	BFP-150-20/300
10	150	25	325	270	12	22	38	BFP-150-25/300
11	200	16	380	330	12	25	40	BFP-200-16/300
12	200	20	380	330	12	25	45	BFP-200-20/300
13	200	25	380	330	12	25	49	BFP-200-25/300
14	250	16	450	387	16	29	45	BFP-250-16/300
15	250	20	450	387	16	29	49	BFP-250-20/300
16	250	25	450	387	16	29	57	BFP-250-25/300

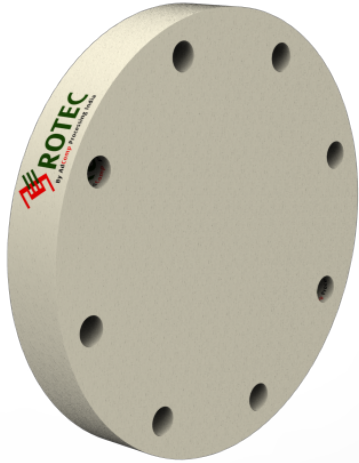
Disclaimer

Whilst every care is taken to ensure that the information on this website is complete and accurate, AdComp Processing Technology Pvt. Ltd. India cannot accept responsibility for any omissions or inaccuracies or for any consequences arising therefrom. By using this website, the user accepts the terms of this disclaimer.

10-02-2023

Rotec SMC Blind Flange

Drilling Standard: ANSI B16.5 Class 300



#	DN (mm)	Pmax (bar)	D (mm)	k (mm)	Holes (no.)	d2 (mm)	T (mm)	Article Number
17	300	16	540	451	16	32	53	BFP-300-16/300
18	300	20	540	451	16	32	57	BFP-300-20/300
19	300	25	540	451	16	32	65	BFP-300-25/300

Disclaimer

Whilst every care is taken to ensure that the information on this website is complete and accurate, AdComp Processing Technology Pvt. Ltd. India cannot accept responsibility for any omissions or inaccuracies or for any consequences arising therefrom. By using this website, the user accepts the terms of this disclaimer.

10-02-2023